



Keeping families together during
their child's cancer treatment in
a compassionate and supportive
community environment.



Childhood
CANCER SUPPORT

Who We Are

Childhood Cancer Support is one of Australia's leading childhood cancer support organisations. We are a family focused charity offering regional families a place to call home whilst their child undergoes cancer treatment. Childhood Cancer Support was founded by a dedicated group of parents who recognised there was an immediate need to provide a safe and family focused environment for regional families requiring urgent accommodation when their child is diagnosed with cancer and having to relocate to Brisbane for medical treatments.

Since 1975 Childhood Cancer Support has been supporting these families in their time of need and we aim to greatly reduce the burden and related stress experienced by families during this critical time. Our accommodation facilities and support also opens up opportunities for other family members and friends to visit and contribute love and support. We provide stability to the lives of children diagnosed with cancer and their families through the provision of accommodation, transport services to and from the Queensland Children's Hospital, social work and counselling services to provide mental health support to the families affected, referral services as well as recreational activities for all family members. Our services are at no cost to the families we support. We seek to remove the emotional and financial stress of living away from home whilst the family are undergoing oncology treatments for their child.

When your child is diagnosed with cancer, everything else in life takes a backseat. Childhood Cancer Support is your helping hand at a time when you need it most.

That's why we're here.



OUR MISSION

Our mission is to help families impacted by childhood cancer

OUR VISION

To create a positive community in the lives of families that have been impacted by childhood cancer

OUR VALUES

- ♥ **Togetherness** - we know every family is different and bring a lifeline to an understanding community
- ♥ **Compassion** - we recognise the toughest parts of the journey and we will be there no matter
- ♥ **Support** - we are the quiet strength and there to help when things are difficult



"Childhood Cancer Support kept our family together, while our hearts were falling apart."
- Jess Connelly



Our Patron



Her Excellency the Honourable
Dr Jeannette Young AC PSM,
Governor of Queensland

Accommodation

Childhood Cancer Support provides accommodation and services free of charge to all regional paediatric oncology families.

We are committed to providing our families with stability, a caring community and support during their child’s cancer journey. We give the best gift of all to seriously ill children with cancer – their loved ones.

Our families can stay in our accommodation for as long as they need – 1 week, 1 month, 6 months, 1 year or even longer. We will be here to support you every step of the way.

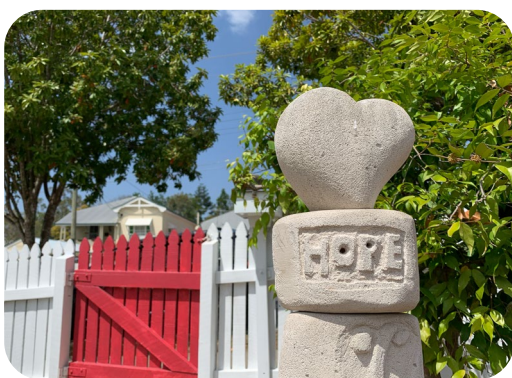
Our recently renovated accommodation facilities are family focused, homely and provide each family with their own –

- ♥ Fully furnished, self-contained unit (1, 2 or 3 bedroom)
- ♥ Fully equipped kitchen
- ♥ Lounge/TV room
- ♥ Free laundry facilities
- ♥ Ability for extended family and friends to visit/stay

In addition, we offer –

- ♥ Outdoor grassed play areas and gardens
- ♥ Outdoor playground
- ♥ Community Room
- ♥ BBQ areas
- ♥ Onsite mini gym (Herston Accommodation)
- ♥ Free onsite parking
- ♥ Community peer support
- ♥ School Holiday programs
- ♥ Onsite social worker
- ♥ Complimentary transport to and from hospital
- ♥ Complimentary airport transfers

We understand and recognise that your child’s immunity is compromised during their cancer journey. Childhood Cancer Support’s facilities are designed for independent living in a sanitised environment in your own home away from home fully self-contained unit.



HERSTON ACCOMMODATION (LONG TERM)

Childhood Cancer Support provides an oncology-specific accommodation solution for families of children undergoing cancer treatment. We have four residential facilities side by side in the leafy suburb of Herston – a total of 13 family styled units.

Our families love staying with us as we provide a sense of community, togetherness, compassion and support at our facilities which is why we are so unique in our level of support.

Our facilities include:

- ♥ 1-3 bedroom self-contained units (all linen and kitchen equipment provided)
- ♥ Hair dryer, straightener and shaver
- ♥ On-site office
- ♥ No charge for utilities such as electricity, water etc.
- ♥ No charge for laundry facility



Childhood Cancer Support has additional recreational facilities including:

- ♥ Private playground with jungle gym and cubby house
- ♥ Community Room – featuring an entertainment system, toys, craft supplies and kitchenette
- ♥ Picnic tables and BBQ facilities
- ♥ On-site mini-gym
- ♥ Weekly free grocery delivery



SOUTH BRISBANE ACCOMMODATION (LONG TERM)

The transition to South Brisbane has allowed Childhood Cancer Support the opportunity to expand and provide an additional four long-term units for families to stay in whilst their child receives life saving treatment at Queensland Children's Hospital.

Much like the Herston accommodation, the units include the following:

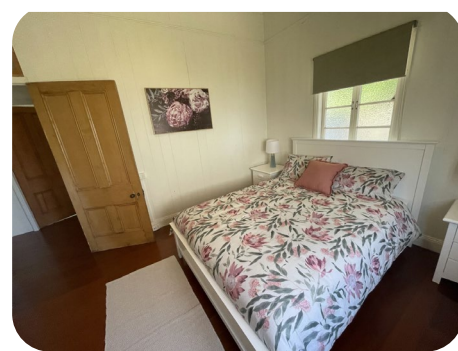
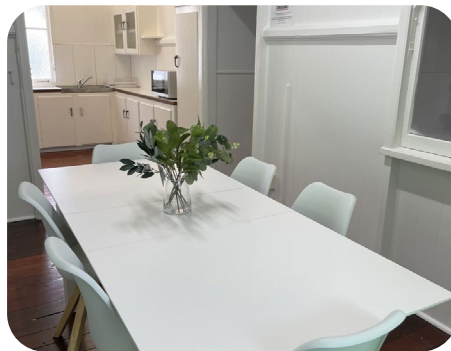
- ♥ 2-bedroom self-contained units (all linen and kitchen equipment provided)
- ♥ Hair dryer, straightener and shaver
- ♥ No charge for laundry facility
- ♥ No charge for utilities such as electricity or water etc.
- ♥ Walking distance to the main Childhood Cancer Support Office
- ♥ 5-10 minute walk to Queensland Children's Hospital and surrounding shops
- ♥ Weekly free grocery delivery



EAST BRISBANE ACCOMMODATION (LONG TERM)

Childhood Cancer Support's East Brisbane Accommodation Village is currently being re-developed with accommodation currently available.

- ♥ 2 or 3 bedroom self-contained units (all linen and kitchen equipment provided)
- ♥ Hair dryer, straightener and shaver
- ♥ No charge for laundry facility
- ♥ No charge for utilities such as electricity or water etc.
- ♥ 20 minute walk to Queensland Children's Hospital and surrounding shops
- ♥ Weekly free grocery delivery



WOOLLOONGABBA (SHORT TERM)

Our short-term accommodation in Woolloongabba is ideal for regionally-based families who are required to return to Brisbane overnight for post-treatment appointments and check-ups at the Queensland Children's Hospital.

Childhood Cancer Support's short-term accommodation facility is located less than 800m away from the Queensland Children's Hospital in South Brisbane. These facilities are available to paediatric oncology families.

Our short-term accommodation facilities are styled similar to that of a hotel room, and include:

- ♥ Furnished single rooms (1-2 beds per room)
- ♥ Hair dryer, straightener and shaver
- ♥ Ready-made beds and clean linen
- ♥ TV and air-conditioning in each room
- ♥ Shared bathroom facilities plus one room with own ensuite
- ♥ Shared kitchen facilities
- ♥ Shared laundry facilities
- ♥ A lovely private outdoor and communal area
- ♥ Family drop-in area
- ♥ On-site office Monday to Friday during business hours (8.30am-4.30pm)

Childhood Cancer Support's transport and recreational services are also open to all short-staying guests.



Family Support Services

The more we can support you, the better you can support your child. Whether it's counselling or advice, connecting with a community or simply help with your day-to-day needs, we're here to help.

QUALIFIED FAMILY SOCIAL WORK SERVICE AND MENTAL HEALTH SUPPORT

Childhood Cancer Support offers a Family Social Work service to its resident families and those families who have returned home after their stay with us. We offer In-Person, Phone, Email or SMS Support and outside hours support can be arranged. All services are complimentary to our in-house families.



ONE-ON-ONE SUPPORT AND COUNSELLING

The Family Social Worker walks alongside all family members (patient, parents, guardians, siblings, grandparents and others) that stay with Childhood Cancer Support when the patient is receiving their treatment. Our service supports families on their return home with both personal contact, information and referrals to local support services.



This service offers practical, therapeutic and general supports to families which include counselling, parent, sibling and extended family support (e.g. spending time with siblings, listening, organising fun activities), informal opportunities for families to meet each other and assistance to access other supports as required.



ACCOMMODATION AND SUPPORT SERVICES

Childhood Cancer Support offers an Accommodation and Support Services Officer. Call 0407 961 975 to book long-term and short-term accommodation. Trish will look after you to ensure your stay is comfortable.



REGIONAL SUPPORT NETWORKS – WHEN IT'S TIME TO RETURN HOME

When families have been away from their homes, pets and loved ones for weeks, months or even years, it is not unusual when returning home that it can be a rather daunting reality. As a means of supporting our regional families when they leave, Childhood Cancer Support can assist families to stay in touch with each other and with our organisation should they so desire.

We want to ensure our families continue to feel supported even after treatment is over and they return home. Our Family Social Work Service can align our families with local Family Ambassadors in their region.



WELCOME PACK

When a family is referred to Childhood Cancer Support, our Family Social Worker personally welcomes the family and spends time with the family showing them their fully self-contained accommodation unit. Our Social Worker also provides the family members with information about the support services we can provide.

Upon arrival at our accommodation unit, each family will receive a complimentary welcome basket full of practical items such as breakfast cereals, tea, coffee, milk, etc. We understand that, upon arrival, our families may feel overwhelmed so our Family Social Worker can step our families through those initial first days of diagnosis and be a person the family can lean on to help them through this difficult time.

TRANSPORT

We understand that getting around Brisbane can be challenging. That's why we provide a free transport service Monday to Friday, for our residential families. This includes:

- ♥ Queensland Children's Hospital transfers to and from our accommodation facilities for hospital medical appointments.
- ♥ Airport transfers
- ♥ Grocery runs on request



COFFEE, CAKE AND CHAT

Each week families are able to come together around our playground for a complimentary coffee, cake and chat with our Family Social Worker. Our Coffee, Cake & Chat events allows families the opportunity to be in a warm and nurturing environment with other families alike and provide support to one another. It is also a time to forget about hospital appointments and enjoy the social aspects of being with other families.

It is a lovely environment where our children are playing in our outdoor playground whilst parents can chat and get to know each other. Many long-standing friendships have been forged at Childhood Cancer Support with our families around our social events. We also invite guest speakers to talk with the families about issues relevant to their cancer journey.



MONTHLY FAMILY BBQ'S

On the last Friday of each month, Childhood Cancer Support offers a free BBQ for all families. It is an evening where the parents and children can unwind, eat a sumptuous steak cooked on the BBQ and sample delicious accompanying foods, plus enjoy one another's company in a relaxed and supportive environment. Our BBQs are run by volunteers, who provide this service with much love and dedication to our oncology families.

SCHOOL HOLIDAY PROGRAM

Our Support Services include activities each school holiday period for the resident families and those families who have previously stayed with Childhood Cancer Support. These activities are for all family members and are different each holiday period. Activities include arts and crafts, cooking, in-house movie days, excursions, sports or competitions. Our Support Services Team makes the activities inclusive for patients and their siblings and ensures that if a patient wants to attend but needs some support or assistance, that appropriate arrangements are made.



CAMP CRYSTAL

Cancer Related Youth Support Time Allocated to Laughter

Each year, Childhood Cancer Support holds a free camping getaway for families of children who are presently facing or have faced childhood cancer, regardless of what stage they are currently at. All are welcome to join the camp.

Some families may have children who are newly diagnosed, some may be in remission, some may be long-term survivors and others may be parents or siblings of those who have passed.

The Camp is run over a 3-day weekend. Camp activities begin on Friday evening and conclude on Sunday evening.

Filled with fun activities suitable for the whole family, Camp Crystal is a weekend-escape for families to recharge and remind themselves that there is a life to be lived outside of hospital appointments and treatments, and a place where you can come to enjoy yourself, relax and reflect.



FAMILY CHRISTMAS PARTY

Christmas is a special time for most of us, but for families who have children with cancer, it can be a daunting holiday. Childhood cancer is an unfortunate reality for the families living at Childhood Cancer Support, and when family and friends reside more than an hour away, the financial and emotional stress can turn this special time into another worry.



It is for this reason that Childhood Cancer Support is committed to offering a living environment to these families that brings them laughter and joy, and lessens the financial stress that can arise around Christmas time.

Each year Childhood Cancer Support invites Santa to the Annual Family Christmas Party where he hands out gifts to paediatric oncology families (patient and siblings). The day is full of fun, laughter, games and provides an environment where families can celebrate with their loved ones.



Additional Services

EDUCATION SUPPORT

When your child is diagnosed with cancer they may not be able to attend school for a period of time. Childhood Cancer Support recognises the challenges that this may create for a child's educational development and have therefore collaborated with the Queensland Children's Hospital in organising for a qualified teacher to come to our accommodation units to assist in your child's education.

Families can contact the Queensland Children's Hospital School direct to utilise this service.





ASSISTIVE TECHNOLOGY AIDS

Wheelchairs

Wheelchair loans are available to children undergoing treatment and who require a wheelchair for short term use. We have a variety of sizes available to suit the needs of your child. Prior to accessing a wheelchair it is important to speak with your child's medical team to ensure that wheelchair is suitable for them.

Shower Chairs

We have a number of shower chairs available for children who require them and these are available upon request.

Medical Beds

State of the art medical beds are available to children undergoing treatment and who have difficulty getting in and out of a normal bed due to mobility issues. Available upon request.

Paediatric IV Poles

Available upon request.

Bath Boards

Available upon request.



ADDITIONAL SERVICES

We also offer the following supports for families:

- ♥ Free groceries or cooked meals delivered each week from OzHarvest
- ♥ On-site gym (new equipment recently arrived!)
- ♥ Community room/space for family gatherings or play space for the kids

Talk Like A Pirate Day

Each year around the 19th September, people around the nation loosen their ties, lose the school/work uniform and get ready to Talk Like a Pirate!

Talk Like a Pirate Day is an opportunity to polish ye hook and say "AHOY there, me hearties" to all ye mateys, school crew and work mates.

Pirate Day is also the official fundraising and awareness day of childhood cancer in Australia for Childhood Cancer Support.

Find out more at www.talklikeapirateday.com.au



COMMUNITY FUNDRAISING

Becoming a fundraiser for Childhood Cancer Support is a fantastic way to raise vital funds and awareness for a great cause, whilst having fun with your family, friends, community or co-workers. The opportunities and ideas for fundraising are limitless!

Put your creativity to the test, swap your birthday gifts for donations, set yourself a fitness challenge, set up an "In Memory" fundraiser or if you're courageous enough shave off your gorgeous locks. Anything is possible to help support our little champions that are affected by childhood cancer.

If you have a great idea for a fundraiser, we would love to hear from you. You can host anything from trivia nights, golf days, morning teas the list is endless. Childhood Cancer Support is legally required to approve and authorise all volunteer fundraising activities. Just give us a call or complete the application to fundraise on our website.

Membership

Become part of our extended family

For a yearly membership fee of just \$5, you'll enjoy these benefits:

- ♥ Invitation to attend the Childhood Cancer Support Annual General Meeting and voting rights at this meeting
- ♥ Invitation to attend other Childhood Cancer Support general meetings and voting rights at these meetings
- ♥ Staying connected to Childhood Cancer Support with regular updates and the opportunity to participate in local events
- ♥ The chance to see first-hand how your support makes a vital contribution to the families




**BECOME
A MEMBER**
Join today!

Apply to become a Childhood Cancer Support member today and join like-minded people who are passionate about supporting children living with cancer and their families.

Once your application has been processed we will be in contact with you within a few weeks to update you on your application.

We look forward to receiving your application and welcoming you into the Childhood Cancer Support community.

The membership year commences on 1 July each year and is for a 12 month period. To become a member or renew your membership please complete the membership form online at www.ccs.org.au/getinvolved/becomeamember

1 year free membership for Oncology families

When newly diagnosed paediatric oncology families stay at Childhood Cancer Support they receive one year's free membership. After the first year we encourage families to continue to be an integral part of Childhood Cancer Support by renewing their membership for only \$5 per person per year.

For more information, visit www.ccs.org.au or call our office on 07 3844 5000.

87 Annerley Road Woolloongabba QLD 4102 | (07) 3844 5000

admin@ccs.org.au | www.ccs.org.au

 [ccsaus](https://www.facebook.com/ccsaus)  [childhoodcancersupportaus](https://www.instagram.com/childhoodcancersupportaus)  [ccsaus](https://twitter.com/ccsaus)  [childhood-cancer-support](https://www.linkedin.com/company/childhood-cancer-support)

ABN: 45 914 790 985 | Registered Charity Number: CH0767 | Incorporated Association: IA08153 | DGR: 900367082